

NOTES:

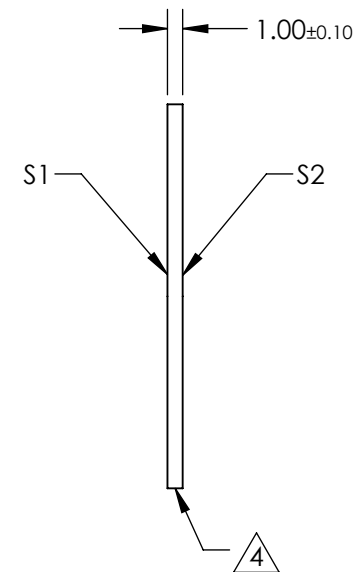
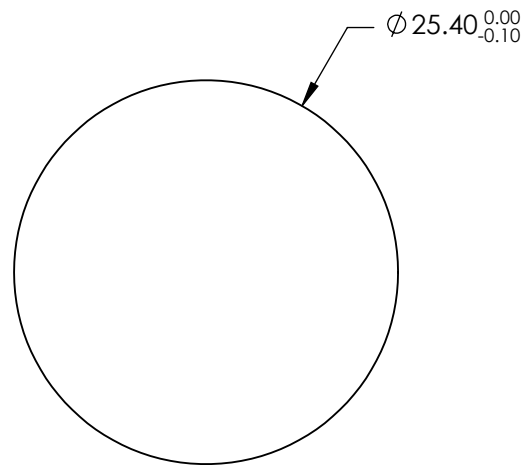
1. SUBSTRATE: FUSED SILICA
2. SURFACE S2 TO BE PARALLEL TO SURFACE S1 TO WITHIN <0.5 ARCMIN
3. COATING (APPLY ACROSS CLEAR APERTURE)
S1: Laser V-Coat (532nm)
Rabs <0.25% @ 532nm @ 0 ±5° AOI

DAMAGE THRESHOLD,
PULSED: 10 J/cm² @ 532nm, 20ns, 20Hz

S2: NONE

4. FINE GRIND SURFACE



- ## 5. ROHS COMPLIANT



**FOR INFORMATION ONLY:
DO NOT MANUFACTURE
PARTS TO THIS DRAWING**

SPECIFICATIONS SUBJECT TO CHANGE WITHOUT NOTICE
DIMENSIONS ARE FOR REFERENCE ONLY



	S1	S2					
SHAPE	PLANO	PLANO	<div>THIRD ANGLE PROJECTION</div> 	TITLE	25.4mm Dia., 1mm Thick, 532nm, Nd:YAG Laser Line Beam Sampler		
SURFACE QUALITY	20 - 10	20 - 10					
CLEAR APERTURE	90%	90%					
BEVEL	PROTECTED AS NEEDED	PROTECTED AS NEEDED	ALL DIMS IN	mm	DWG NO	29020	SHEET 7 OF 8