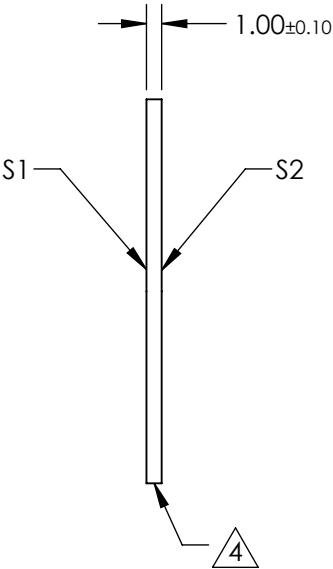
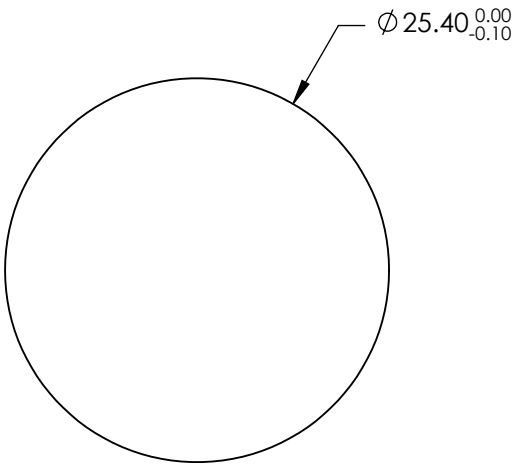
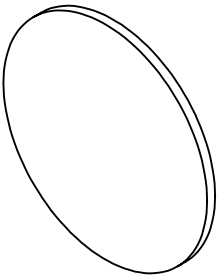


- NOTES:
- 1. SUBSTRATE: FUSED SILICA
 - 2. SURFACE S2 TO BE PARALLEL TO SURFACE S1 TO WITHIN <0.5 ARCMIN
 - 3. COATING (APPLY ACROSS CLEAR APERTURE)
 - S1: Laser V-Coat (1064nm)
 - Rabs <0.25% @ 1064nm @ 0 ±5° AOI
- DAMAGE THRESHOLD,
PULSED: 15 J/cm2 @ 1064nm, 20ns, 20Hz
- S2: NONE

4. FINE GRIND SURFACE

5. ROHS COMPLIANT



**FOR INFORMATION ONLY:
DO NOT MANUFACTURE
PARTS TO THIS DRAWING**

SPECIFICATIONS SUBJECT TO CHANGE WITHOUT NOTICE
DIMENSIONS ARE FOR REFERENCE ONLY

	S1	S2
SHAPE	PLANO	PLANO
SURFACE QUALITY	20 - 10	20 - 10
CLEAR APERTURE	90%	90%
BEVEL	PROTECTED AS NEEDED	PROTECTED AS NEEDED

THIRD ANGLE
PROJECTION

ALL DIMS IN mm

EO® **Edmund Optics®**

TITLE 25.4mm Dia., 1mm Thick, 1064nm, Nd:YAG
Laser Line Beam Sampler

DWG NO 29021 SHEET
8 OF 8