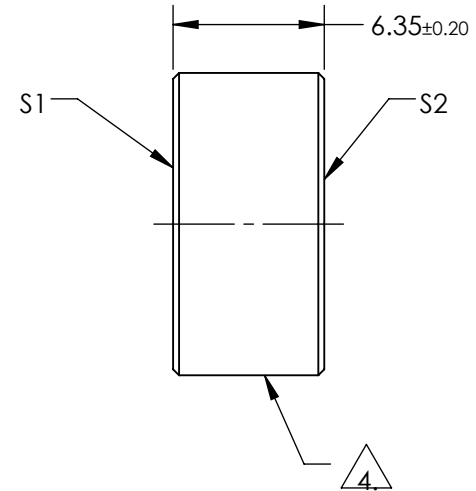
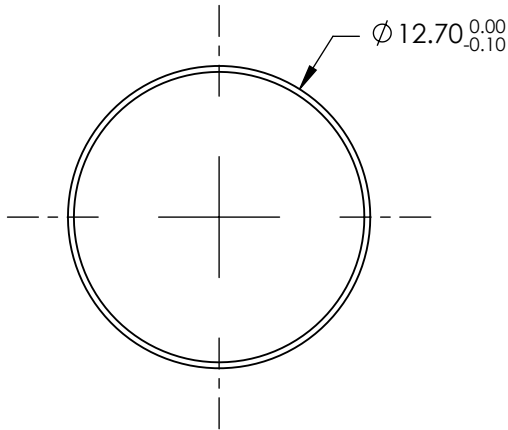


NOTES:


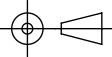
1. SUBSTRATE:
FUSED SILICA
2. SURFACE S2 TO BE PARALLEL TO S1 TO WITHIN <3 ARCMIN
3. COATING (APPLY ACROSS COATING APERTURE)
S1: DIELECTRIC
R(ABS) ≥ 99.50% @ 635, 670, & 1064nm

S2: NONE
4. FINE GRIND SURFACE
5. POWER, IRREGULARITY, SURFACE QUALITY, AND COATING SPECIFICATIONS APPLY ACROSS CLEAR APERTURE
6. ROHS COMPLIANT



**FOR INFORMATION ONLY:
DO NOT MANUFACTURE
PARTS TO THIS DRAWING**

SPECIFICATIONS SUBJECT TO CHANGE WITHOUT NOTICE
DIMENSIONS ARE FOR REFERENCE ONLY

	S1	S2	 Edmund Optics®			
SHAPE	PLANO	PLANO		TITLE	Ø12.7mm x 6.35mm 635-670/1064nm DUAL BAND LASER MIRROR	
SURFACE ACCURACY P-V AT 632.8nm	λ/10	N/A		DWG NO	28977	SHEET 1 OF 1
SURFACE QUALITY	10-5	COMMERCIAL POLISH				
CLEAR APERTURE	Ø11.43	N/A				
BEVEL	PROTECTIVE AS NEEDED	PROTECTIVE AS NEEDED	ALL DIMS IN	mm		