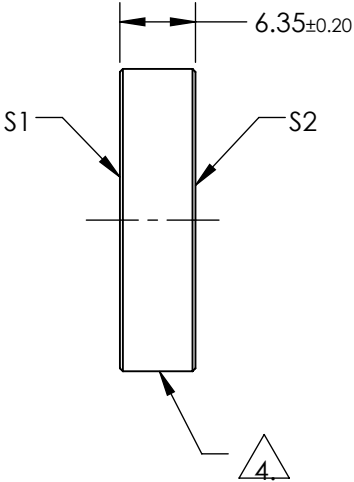
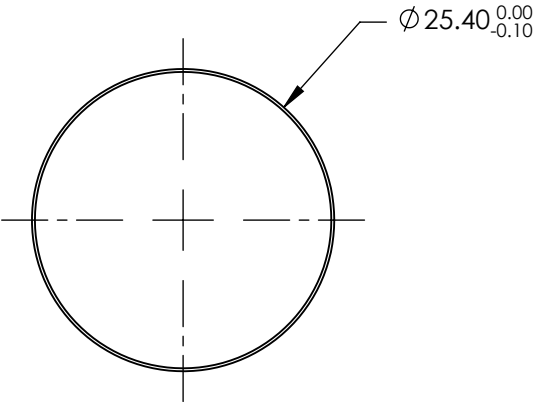



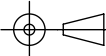
NOTES:

1. SUBSTRATE:
FUSED SILICA
2. SURFACE S2 TO BE PARALLEL TO S1 TO WITHIN <3 ARCMIN
3. COATING (APPLY ACROSS COATING APERTURE)
S1: DIELECTRIC
R(AVG) ≥ 99.50% @ 532nm & 1064nm @ 45° AOI
R(AVG) ≥ 80% @ 630 – 655nm @ 45° AOI
S2: NONE
4. FINE GRIND SURFACE
5. POWER, IRREGULARITY, SURFACE QUALITY, AND COATING
SPECIFICATIONS APPLY ACROSS CLEAR APERTURE
6. ROHS COMPLIANT



**FOR INFORMATION ONLY:
DO NOT MANUFACTURE
PARTS TO THIS DRAWING**

SPECIFICATIONS SUBJECT TO CHANGE WITHOUT NOTICE
DIMENSIONS ARE FOR REFERENCE ONLY

	S1	S2			 Edmund Optics®		
SHAPE	PLANO	PLANO			Ø25.4mm x 6.35mm 532/630-655/1064nm DUAL BAND LASER MIRROR		
SURFACE ACCURACY P-V AT 632.8nm	λ/10	N/A		TITLE			
SURFACE QUALITY	10-5	COMMERCIAL POLISH		DWG NO	28981		
CLEAR APERTURE	Ø22.86	N/A				SHEET 1 OF 1	
BEVEL	PROTECTIVE AS NEEDED	PROTECTIVE AS NEEDED	ALL DIMS IN	mm			