

1. SUBSTRATE:
FUSED SILICA

- S1: DIELECTRIC

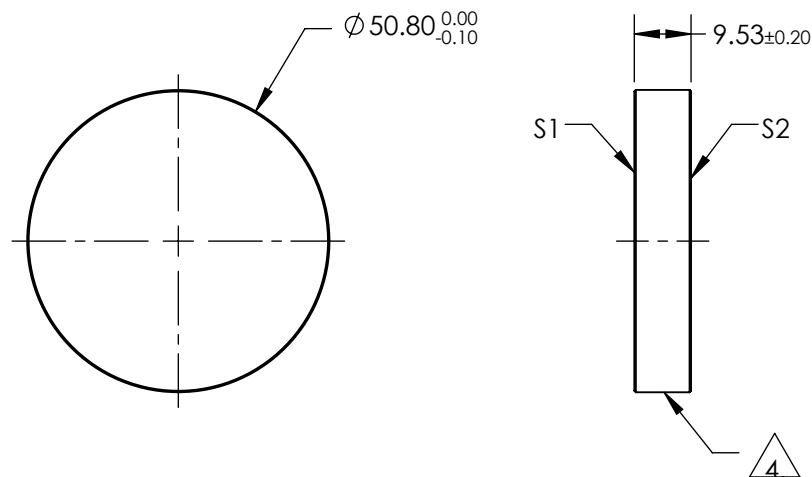
$$R(\text{AVG}) \geq 99.50\% \text{ @ } 532\text{nm} \text{ \& } 1064\text{nm @ } 45^\circ \text{ AOI}$$
$$R(\text{AVG}) \geq 80\% \text{ @ } 630 - 655\text{nm @ } 45^\circ \text{ AOI}$$

S2: NONE

- #### 4. FINE GRIND SURFACE


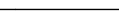
5. POWER, IRREGULARITY, SURFACE QUALITY, AND COATING
SPECIFICATIONS APPLY ACROSS CLEAR APERTURE

- ## 6. ROHS COMPLIANT



FOR INFORMATION ONLY:
DO NOT MANUFACTURE
PARTS TO THIS DRAWING

SPECIFICATIONS SUBJECT TO CHANGE WITHOUT NOTICE
DIMENSIONS ARE FOR REFERENCE ONLY

	S1	S2	 Edmund Optics®				Ø50.8mm x 9.53mm 532/630-655/1064nm DUAL BAND LASER MIRROR	
SHAPE	PLANO	PLANO						
SURFACE ACCURACY P-V AT 632.8nm	λ/10	N/A			TITLE			
SURFACE QUALITY	10-5	COMMERCIAL POLISH						
CLEAR APERTURE	Ø45.72	N/A						
BEVEL	PROTECTIVE AS NEEDED	PROTECTIVE AS NEEDED	ALL DIMS IN	mm	DWG NO	28982		SHEET 1 OF 1