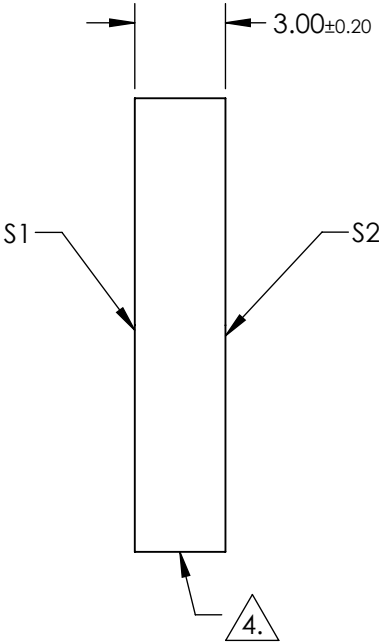
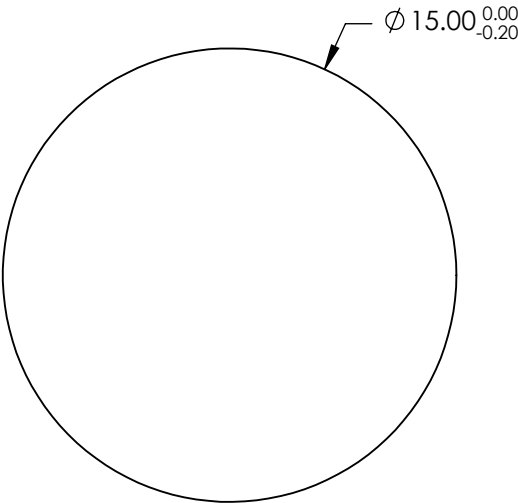
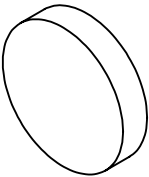


NOTES:

- 1. SUBSTRATE:
ZERODUR®
- 2. SURFACE S2 TO BE PARALLEL TO SURFACE S1 TO WITHIN 30 ARCSEC
- 3. COATING (APPLY ACROSS CLEAR APERTURE)
S1: R(abs) >99.8% @ 355nm @ 45° AOI
R(avg) >99.5% @ 351 - 358nm @ 45° AOI
- DAMAGE THRESHOLD, BY DESIGN:
6 J/cm² @ 355nm, 20ns, 20Hz
- S2: NONE
- 4. FINE GRIND SURFACE
- 5. POWER, IRREGULARITY, AND SURFACE QUALITY SPECIFICATIONS APPLY
ACROSS CLEAR APERTURE
- 6. CLEAR APERTURE AND COATING APERTURE ARE CENTERED ON SURFACES



**FOR INFORMATION ONLY:
DO NOT MANUFACTURE
PARTS TO THIS DRAWING**

SPECIFICATIONS SUBJECT TO CHANGE WITHOUT NOTICE
DIMENSIONS ARE FOR REFERENCE ONLY

	S1	S2
SHAPE	PLANO	PLANO
SURFACE QUALITY	20-10	COMMERCIAL POLISH
CLEAR APERTURE	Ø 13.50	N/A
COATING APERTURE	Ø 13.50	N/A
BEVEL	PROTECTED AS NEEDED	PROTECTED AS NEEDED



ALL DIMS IN

mm

EO® **Edmund Optics**®

TITLE

15mm Dia. 355nm 45°, Nd:YAG Laser Line
Mirror

DWG NO

26415

SHEET
10 OF 86