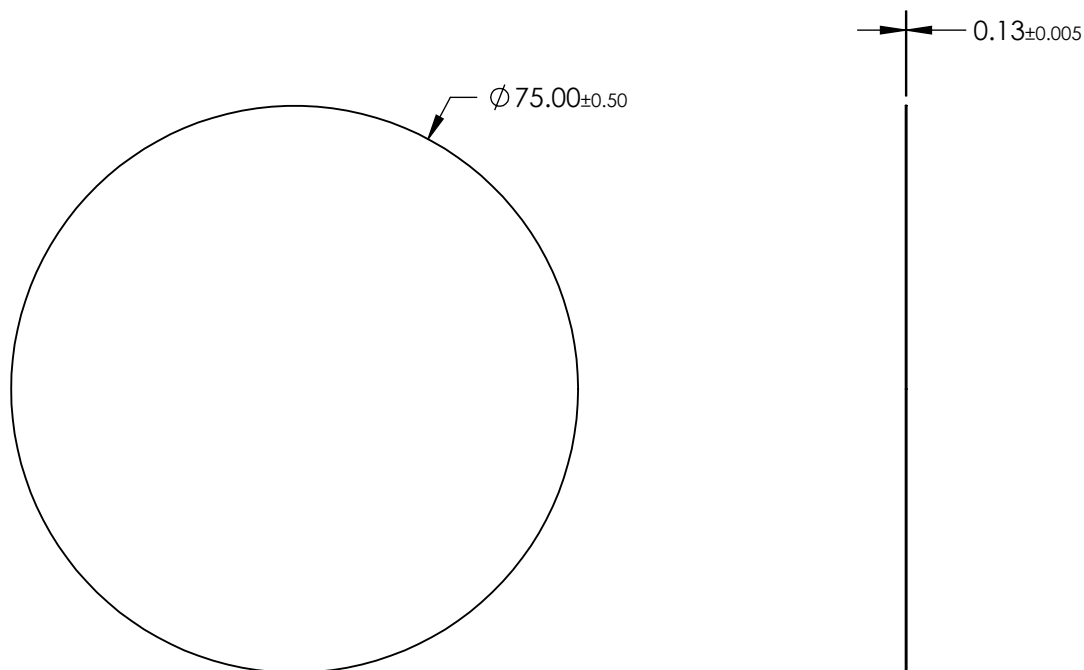
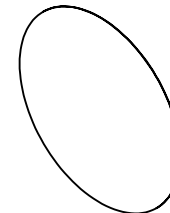


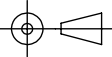

NOTES:

1. SUBSTRATE:  
TAC FILM
2. COATING (APPLY ACROSS CLEAR APERTURE)  
S1 & S2: NONE
3. PROTECTIVE FILM ON NON-MATTE SURFACE SHOULD BE REMOVED BEFORE USE
4. WAVELENGTH RANGE: 300 - 1100nm
5. ROHS COMPLIANT



**FOR INFORMATION ONLY:  
DO NOT MANUFACTURE  
PARTS TO THIS DRAWING**

SPECIFICATIONS SUBJECT TO CHANGE WITHOUT NOTICE  
DIMENSIONS ARE FOR REFERENCE ONLY

THIRD ANGLE PROJECTION 		 <b>Edmund Optics®</b>	
TITLE		75mm Diameter Light Diffusing Film	
ALL DIMS IN	mm	DWG NO	27095
			SHEET 32 OF 86