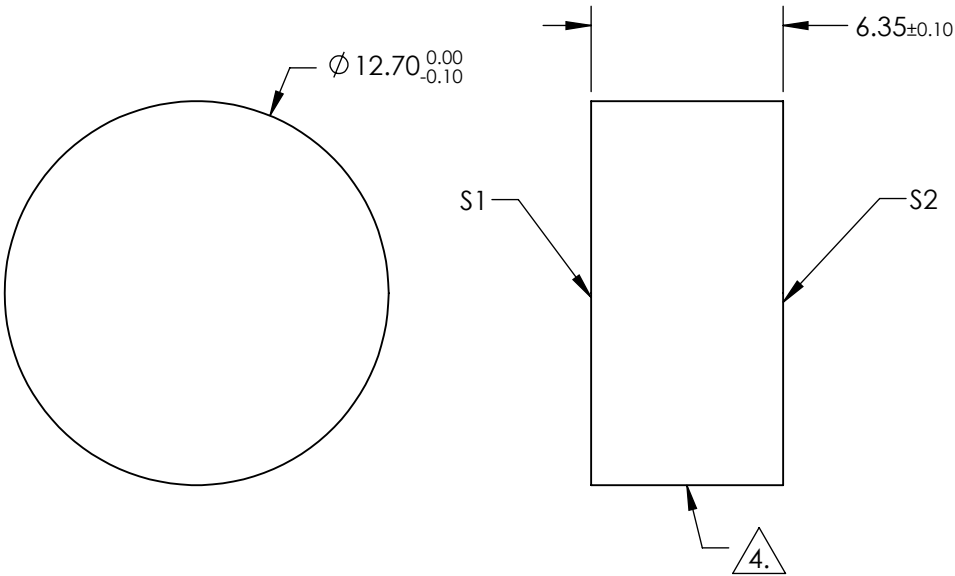
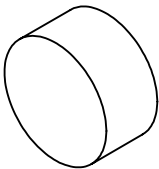



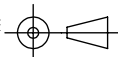
NOTES:

- 1. SUBSTRATE:  
FUSED SILICA
- 2. SURFACE S2 TO BE PARALLEL TO SURFACE S1 TO WITHIN <3 ARCmin
- 3. COATING (APPLY ACROSS CLEAR APERTURE)  
S1: R(abs) S & P > 99.80% @ 800nm @ 45° AOI  
R(avg) > 99.5% @ 780 - 820nm @ 45° AOI
- S2: NONE
- 4. FINE GRIND SURFACE
- 5. POWER, IRREGULARITY, AND SURFACE QUALITY SPECIFICATIONS APPLY  
ACROSS CLEAR APERTURE
- 6. CLEAR APERTURE AND COATING APERTURE ARE CENTERED ON SURFACES



**FOR INFORMATION ONLY:  
DO NOT MANUFACTURE  
PARTS TO THIS DRAWING**

SPECIFICATIONS SUBJECT TO CHANGE WITHOUT NOTICE  
DIMENSIONS ARE FOR REFERENCE ONLY

	S1	S2				
SHAPE	PLANO	PLANO	 <b>Edmund Optics®</b>			
SURFACE QUALITY	10 - 5	COMMERCIAL POLISH				
SURFACE FLATNESS	$\lambda/10$	N/A		TITLE		12.7mm Dia., 6.35mm Thick, Fused Silica 800nm Ti:Sapphire Mirror, 45 Deg AOI
CLEAR APERTURE	$\varnothing 11.43$	N/A		DWG NO		28986
COATING APERTURE	$\varnothing 11.43$	N/A	ALL DIMS IN	mm		
BEVEL	PROTECTED AS NEEDED	PROTECTED AS NEEDED			SHEET 45 OF 86	