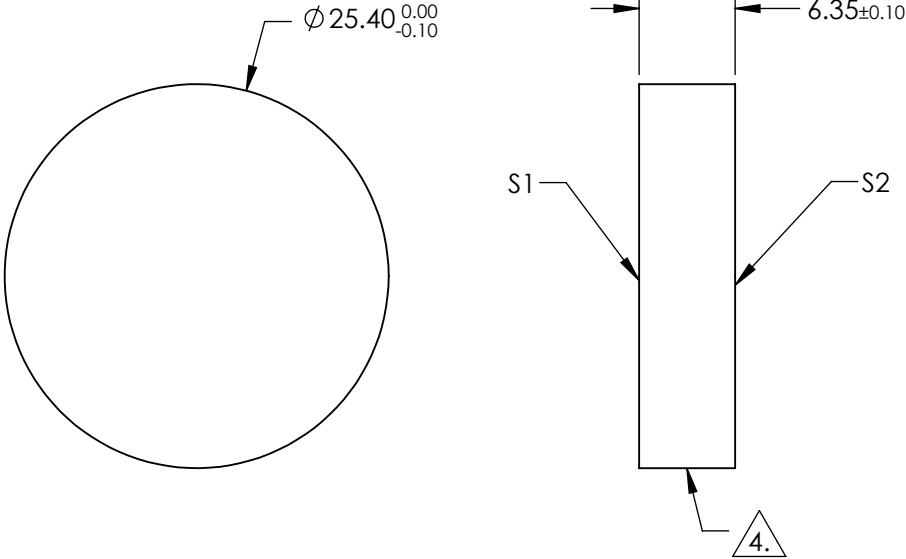
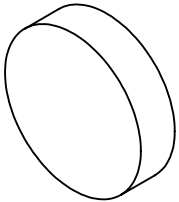


NOTES:

- 1. SUBSTRATE:  
FUSED SILICA
- 2. SURFACE S2 TO BE PARALLEL TO SURFACE S1 TO WITHIN <3 ARCmin
- 3. COATING (APPLY ACROSS CLEAR APERTURE)  
S1: R(abs) S & P > 99.80% @ 800nm @ 0-45° AOI
- S2: NONE
- 4. FINE GRIND SURFACE
- 5. POWER, IRREGULARITY, AND SURFACE QUALITY SPECIFICATIONS APPLY  
ACROSS CLEAR APERTURE
- 6. CLEAR APERTURE AND COATING APERTURE ARE CENTERED ON SURFACES



**FOR INFORMATION ONLY:  
DO NOT MANUFACTURE  
PARTS TO THIS DRAWING**

SPECIFICATIONS SUBJECT TO CHANGE WITHOUT NOTICE  
DIMENSIONS ARE FOR REFERENCE ONLY

	S1	S2	<div><div><div><div></div><div></div></div><div></div></div><div>Edmund Optics®</div></div> <div><div><div>THIRD ANGLE PROJECTION</div><div></div></div><div><div>ALL DIMS IN</div><div>mm</div></div><div><div>TITLE</div><div>25.4mm Dia., 6.35mm Thick, Fused Silica 800nm Ti:Sapphire Mirror, 0-45 Deg AOI</div></div><div><div>DWG NO</div><div>28993</div></div><div><div>SHEET</div><div>52 OF 86</div></div></div>
SHAPE	PLANO	PLANO	
SURFACE QUALITY	10 - 5	COMMERCIAL POLISH	
SURFACE FLATNESS	λ/10	N/A	
CLEAR APERTURE	Ø 22.86	N/A	
COATING APERTURE	Ø 22.86	N/A	
BEVEL	PROTECTED AS NEEDED	PROTECTED AS NEEDED	