

NOTES:

1. SUBSTRATE:
FUSED SILICA

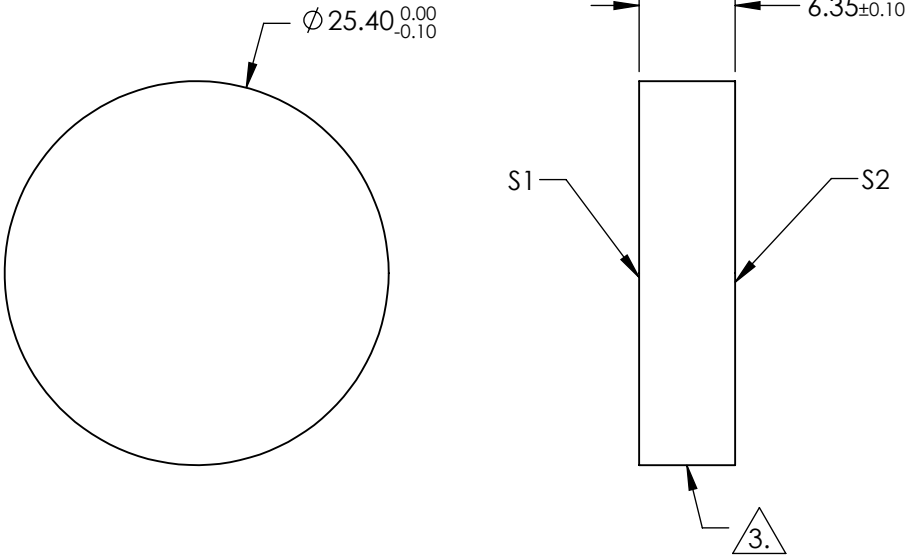
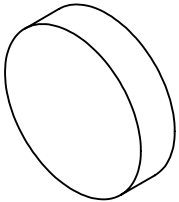
2. COATING (APPLY ACROSS CLEAR APERTURE)
S1: Ultrafast (1260 - 1360nm)
R(avg) S & P > 99.90% @ 1310nm @ 45° AOI
R(avg) > 99.7% @ 1260 - 1360nm @ 45° AOI

GDD SPECIFICATION:
GDDs: ±20 fs² @ 1260 - 1360nm @ 45° AOI
GDDp: ±30 fs² @ 1285 - 1335 nm @ 45° AOI

S2: NONE


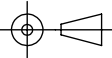
3. FINE GRIND SURFACE

4. ROHS COMPLIANT



**FOR INFORMATION ONLY:
DO NOT MANUFACTURE
PARTS TO THIS DRAWING**

SPECIFICATIONS SUBJECT TO CHANGE WITHOUT NOTICE
DIMENSIONS ARE FOR REFERENCE ONLY

	S1	S2	 Edmund Optics®			
SHAPE	PLANO	PLANO				
SURFACE QUALITY	10 - 5	COMMERCIAL POLISH				
CLEAR APERTURE	$\varnothing 22.86$	N/A				
SURFACE FLATNESS	$\lambda/8$	N/A				
BEVEL	PROTECTED AS NEEDED	PROTECTED AS NEEDED				
			ALL DIMS IN	mm	TITLE	1310nm, 25.4mm Dia. x 6.35mm Thickness, Ultrafast Laser Mirror
			DWG NO			28996
						SHEET 55 OF 86