

NOTES:

- 1. SUBSTRATE:
FUSED SILICA
- 2. SUFRACE S2 TO BE PARALLEL TO S1 TO WITHIN <3 ARCMIN
- 3. COATING (APPLY ACROSS CLEAR APERTURE)
S1: R(abs): >99% @ 532nm
R(abs): >99% @ 1064nm
T(abs): >70% @ 266nm

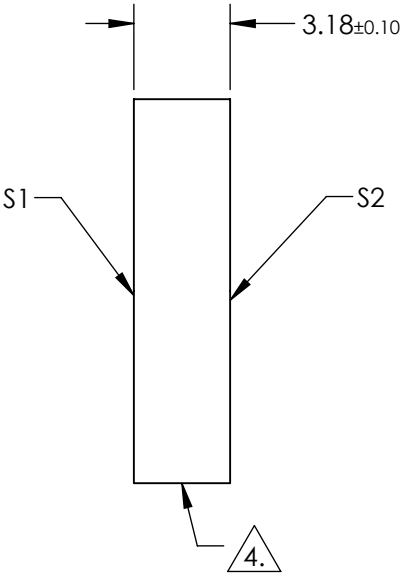
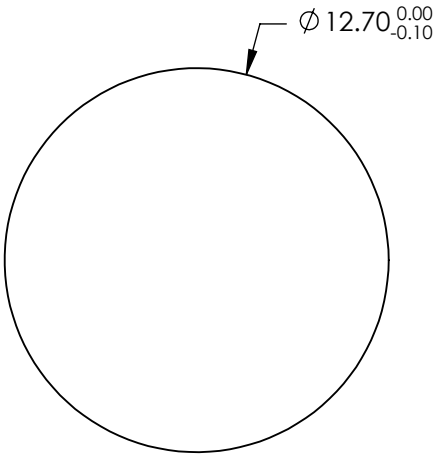
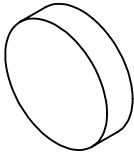
S2: R(abs): <1.0% @ 266nm

DAMAGE THRESHOLD,PULSED:
S1: 1 J/cm² @ 266nm, 20ns, 20Hz
5 J/cm² @ 532nm, 20ns, 20Hz
7.5 J/cm² @ 1064nm, 20ns, 20Hz

S2: 1 J/cm² @ 20ns, 20Hz @ 266nm

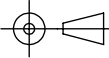

4. FINE GRIND SURFACE

5. ROHS COMPLIANT



**FOR INFORMATION ONLY:
DO NOT MANUFACTURE
PARTS TO THIS DRAWING**

SPECIFICATIONS SUBJECT TO CHANGE WITHOUT NOTICE
DIMENSIONS ARE FOR REFERENCE ONLY

	S1	S2			 Edmund Optics®		
SHAPE	PLANO	PLANO			TITLE	12.7mm Dia., 266nm T, 532 & 1064nm R 45° Thin Harmonic Separator	
SURFACE QUALITY	10 - 5	COMMERCIAL POLISH				DWG NO	29049
CLEAR APERTURE	Ø 11.43	N/A	ALL DIMS IN	mm			
SURFACE FLATNESS	λ/10	N/A					
BEVEL	PROTECTED AS NEEDED	PROTECTED AS NEEDED			SHEET 68 OF 86		