

NOTES:

1. SUBSTRATE:
FUSED SILICA

2. SURFACE S2 TO BE PARALLEL TO S1 TO WITHIN <3 ARCMIN

3. COATING (APPLY ACROSS CLEAR APERTURE)

S1: R(abs): >99% @ 532nm

R(abs): >99% @ 1064nm

T(abs): >70% @ 266nm

S2: R(abs): <1.0% @ 266nm

DAMAGE THRESHOLD, PULSED:

S1: 5 J/cm² @ 532nm, 20ns, 20Hz

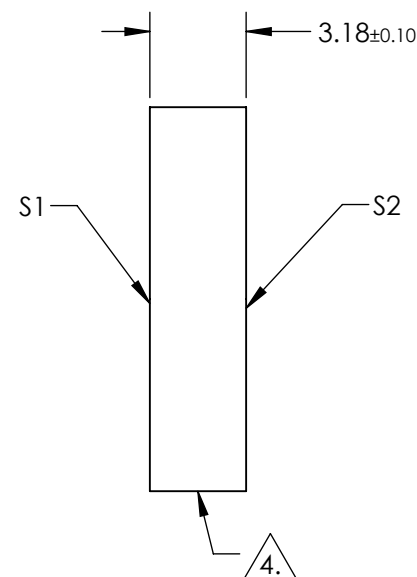
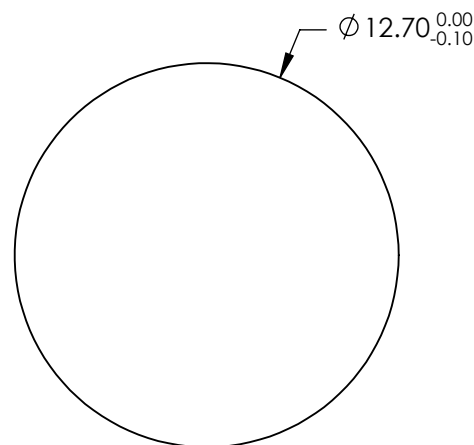
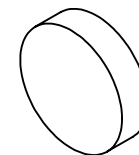
7.5 J/cm² @ 1064nm, 20ns, 20Hz

2.5 J/cm² @ 355nm, 20ns, 20Hz

S2: 7.5 J/cm² @ 355nm, 20ns, 20Hz

4. FINE GRIND SURFACE

5. ROHS COMPLIANT



**FOR INFORMATION ONLY:
DO NOT MANUFACTURE
PARTS TO THIS DRAWING**

SPECIFICATIONS SUBJECT TO CHANGE WITHOUT NOTICE
DIMENSIONS ARE FOR REFERENCE ONLY

	S1	S2
SHAPE	PLANO	PLANO
SURFACE QUALITY	10 - 5	COMMERCIAL POLISH
CLEAR APERTURE	Ø 11.43	N/A
SURFACE FLATNESS	λ/10	N/A
BEVEL	PROTECTED AS NEEDED	PROTECTED AS NEEDED



ALL DIMS IN

mm



Edmund Optics®

TITLE

12.7mm Dia., 355nm T, 532 & 1064nm R 45°
Thin Harmonic Separator

DWG NO

29052

SHEET
71 OF 86