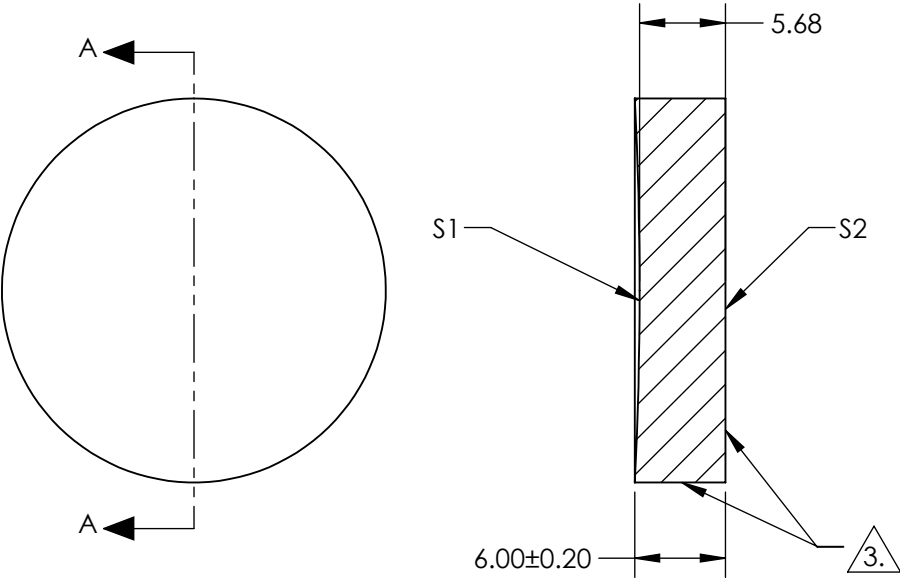


- NOTES:
- 1. SUBSTRATE:
FUSED SILICA
 - 2. COATING (APPLY ACROSS CLEAR APERTURE)
S1 & S2: NONE
 - 3. FINE GRIND SURFACE
 - 4. POWER, IRREGULARITY, AND SURFACE QUALITY
SPECIFICATIONS APPLY ACROSS CLEAR APERTURE
 - 5. ROHS COMPLIANT



**FOR INFORMATION ONLY:
DO NOT MANUFACTURE
PARTS TO THIS DRAWING**

SPECIFICATIONS SUBJECT TO CHANGE WITHOUT NOTICE
DIMENSIONS ARE FOR REFERENCE ONLY

	S1	S2	<div><div><div><div>Edmund Optics®</div></div></div><div><div>25.4mm Dia. x 250mm ROC, Uncoated, Concave Laser Mirror</div></div></div>
--	----	----	---