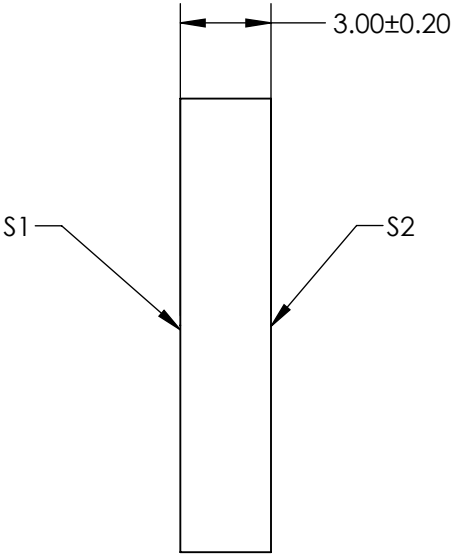
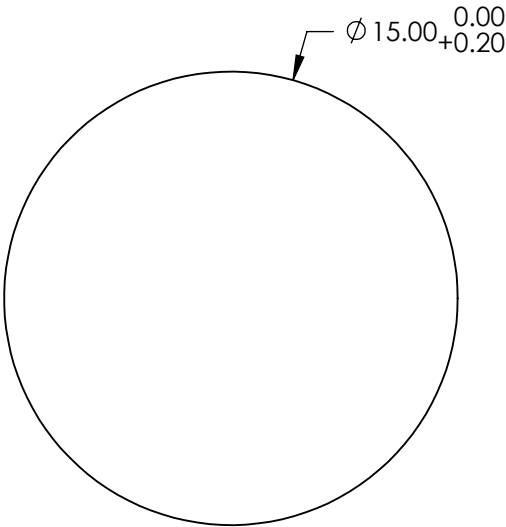
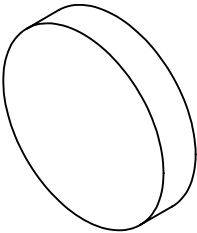


NOTES:

- 1. SUBSTRATE:
FUSED SILICA
- 2. PARALLELISM: 30 ARCSEC
- 3. COATING (APPLY ACROSS CLEAR APERTURE)

S1: UV Enhanced Aluminum (250-700nm)
R(avg) >85% @ 250 - 700nm
R(avg) >89% @ 250 - 450nm
S2: NONE
- 4. POWER, IRREGULARITY, AND SURFACE QUALITY SPECIFICATIONS
APPLY ACROSS CLEAR APERTURE
- 5. ROHS COMPLIANT



**FOR INFORMATION ONLY:
DO NOT MANUFACTURE
PARTS TO THIS DRAWING**


SPECIFICATIONS SUBJECT TO CHANGE WITHOUT NOTICE
DIMENSIONS ARE FOR REFERENCE ONLY

	S1	S2
SHAPE	PLANO	PLANO
SURFACE QUALITY	20 - 10	COMMERICAL POLISH
SURFACE FLATNESS	λ/20 (PRE-COATING)	N/A
BEVEL	PROTECTED AS NEEDED	PROTECTED AS NEEDED

THIRD ANGLE
PROJECTION

ALL DIMS IN

mm

 Edmund Optics®

TITLE

15mm Dia UV Enhanced Aluminum, λ/20 Mirror

DWG NO

70287

SHEET

2 OF 8