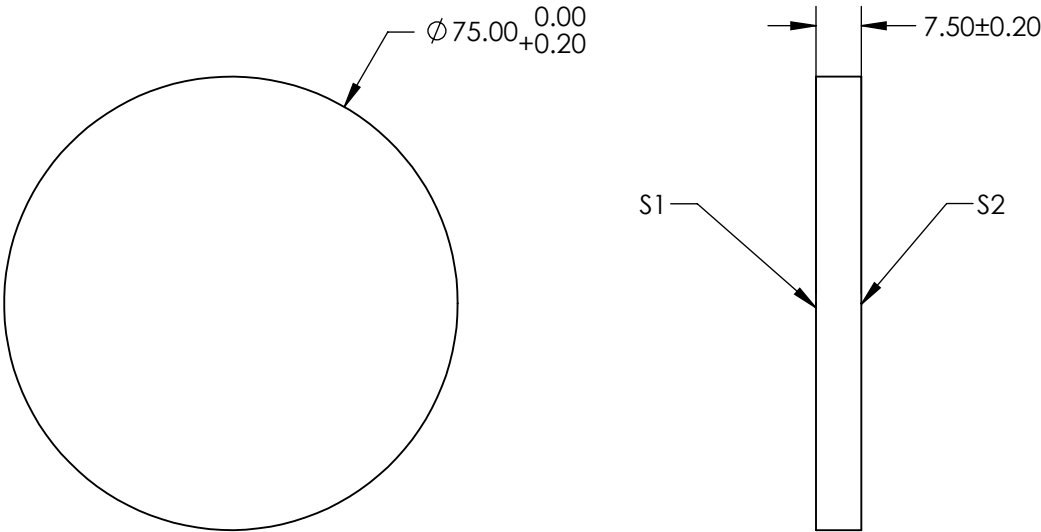
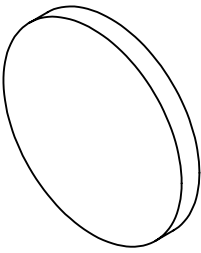



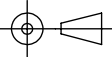
NOTES:

- 1. SUBSTRATE:  
FUSED SILICA
- 2. PARALLELISM: 30 ARCSEC
- 3. COATING (APPLY ACROSS CLEAR APERTURE)  
  
S1: UV Enhanced Aluminum (250-700nm)  
R(avg) >85% @ 250 - 700nm  
R(avg) >89% @ 250 - 450nm  
S2: NONE
- 4. POWER, IRREGULARITY, AND SURFACE QUALITY SPECIFICATIONS  
APPLY ACROSS CLEAR APERTURE
- 5. ROHS COMPLIANT



**FOR INFORMATION ONLY:  
DO NOT MANUFACTURE  
PARTS TO THIS DRAWING**

SPECIFICATIONS SUBJECT TO CHANGE WITHOUT NOTICE  
DIMENSIONS ARE FOR REFERENCE ONLY

	S1	S2	 Edmund Optics®			
SHAPE	PLANO	PLANO		TITLE	75mm Dia UV Enhanced Aluminum, $\lambda/20$ Mirror	
SURFACE QUALITY	20 - 10	COMMERICAL POLISH				
SURFACE FLATNESS	$\lambda/20$ (PRE-COATING)	N/A				
BEVEL	PROTECTED AS NEEDED	PROTECTED AS NEEDED		DWG NO	70300	SHEET 8 OF 8
			ALL DIMS IN	mm		