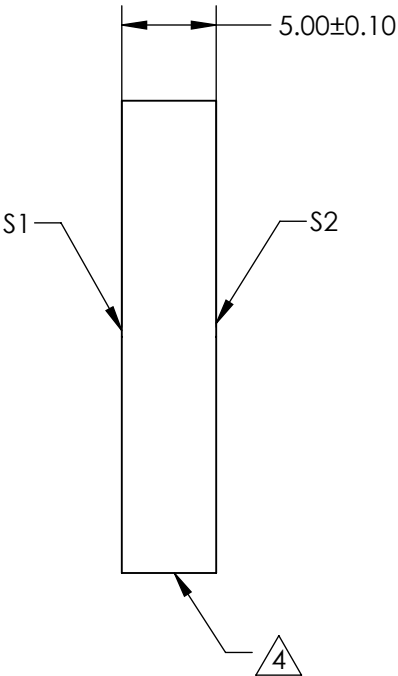
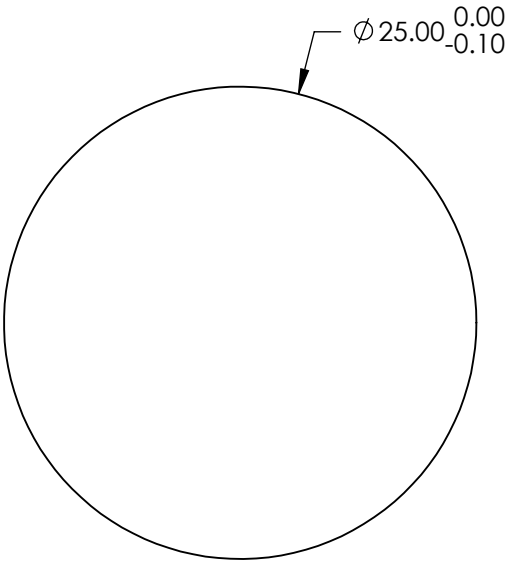
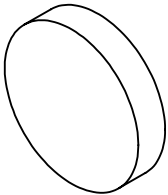



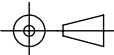
NOTES:

- 1. SUBSTRATE:
FUSED SILICA (CORNING 7980)
- 2. S1 TO BE PARALLEL WITH S2 TO WITHIN <1 ARCMIN
- 3. COATING (APPLY ACROSS CLEAR APERTURE)
S1 & S2: UV-AR (250-425nm)
R(ABS) ≤1.0% @ 250 - 425nm
R(AVG) ≤0.75% @ 250 - 425nm
R(AVG) ≤0.5% @ 370 - 420nm
- 4. FINE GRIND SURFACE
- 5. ROHS COMPLIANT



**FOR INFORMATION ONLY:
DO NOT MANUFACTURE
PARTS TO THIS DRAWING**

SPECIFICATIONS SUBJECT TO CHANGE WITHOUT NOTICE
DIMENSIONS ARE FOR REFERENCE ONLY

	S1	S2			 Edmund Optics®	
SHAPE	PLANO	PLANO	<div>THIRD ANGLE PROJECTION</div> 	TITLE	25mm Dia., 5mm Thick, UV-AR Coated, λ/4 Fused Silica Window	
SURFACE QUALITY	40 - 20	40 - 20				
CLEAR APERTURE	Ø 22.50	Ø 22.50				
BEVEL	PROTECTED AS NEEDED	PROTECTED AS NEEDED	ALL DIMS IN	mm	DWG NO	72365
						SHEET 31 OF 84