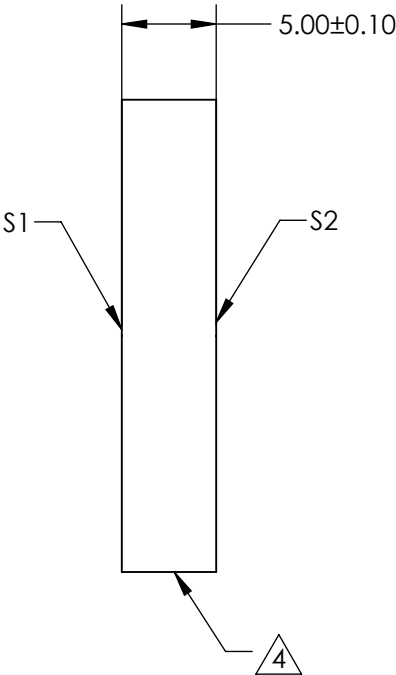
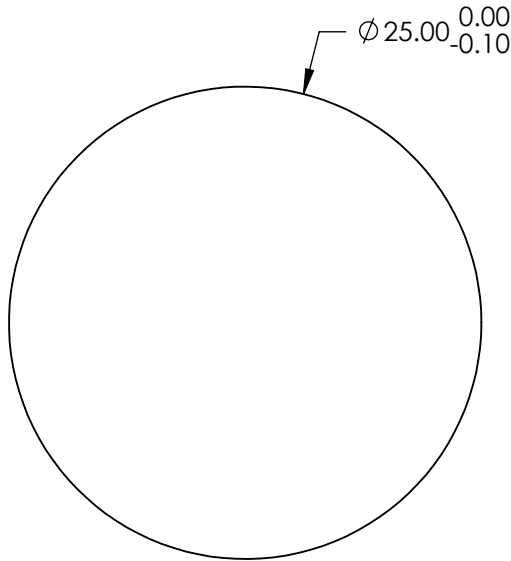


- NOTES:
- 1. SUBSTRATE:
FUSED SILICA (CORNING 7980)
 - 2. S1 TO BE PARALLEL WITH S2 TO WITHIN <1 ARCMIN
 - 3. COATING (APPLY ACROSS CLEAR APERTURE)
S1 & S2: UV-VIS (250-700nm)
R(ABS) ≤1.0% @ 350 - 450nm
R(AVG) ≤1.5% @ 250 - 700nm

4. FINE GRIND SURFACE

5. ROHS COMPLIANT

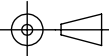


**FOR INFORMATION ONLY:
DO NOT MANUFACTURE
PARTS TO THIS DRAWING**

SPECIFICATIONS SUBJECT TO CHANGE WITHOUT NOTICE
DIMENSIONS ARE FOR REFERENCE ONLY

	S1	S2
SHAPE	PLANO	PLANO
SURFACE QUALITY	40 - 20	40 - 20
CLEAR APERTURE	$\phi 22.50$	$\phi 22.50$
BEVEL	PROTECTED AS NEEDED	PROTECTED AS NEEDED

THIRD ANGLE
PROJECTION



ALL DIMS IN

mm



Edmund Optics®

TITLE

25mm Dia., 5mm Thick, UV-VIS Coated, $\lambda/4$
Fused Silica Window

DWG NO

72366

SHEET
32 OF 84