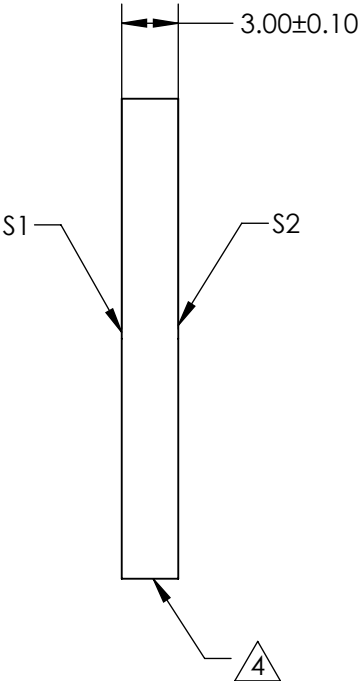
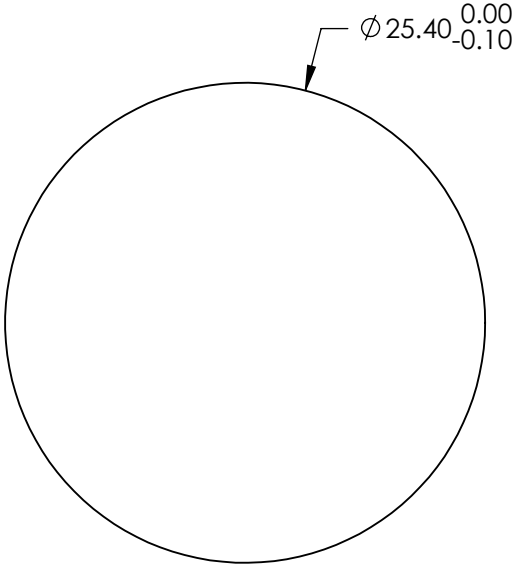
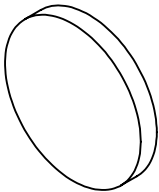



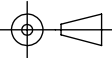
NOTES:

- 1. SUBSTRATE:
FUSED SILICA (CORNING 7980)
- 2. S1 TO BE PARALLEL WITH S2 TO WITHIN <1 ARCMIN
- 3. COATING (APPLY ACROSS CLEAR APERTURE)
S1 & S2: NIR II (750-1550nm)
R(ABS) ≤1.5% @ 750 - 800nm
R(ABS) ≤1.0% @ 800 - 1550nm
R(AVG) ≤0.7% @ 750 - 1550nm
- 4. FINE GRIND SURFACE
- 5. ROHS COMPLIANT



**FOR INFORMATION ONLY:
DO NOT MANUFACTURE
PARTS TO THIS DRAWING**

SPECIFICATIONS SUBJECT TO CHANGE WITHOUT NOTICE
DIMENSIONS ARE FOR REFERENCE ONLY

	S1	S2	 Edmund Optics®			
SHAPE	PLANO	PLANO		TITLE	25.4mm Dia., 3mm Thick, NIR II Coated, λ/4 Fused Silica Window	
SURFACE QUALITY	40 - 20	40 - 20		DWG NO	72381	SHEET 41 OF 84
CLEAR APERTURE	Ø 22.86	Ø 22.86				
BEVEL	PROTECTED AS NEEDED	PROTECTED AS NEEDED		ALL DIMS IN	mm	