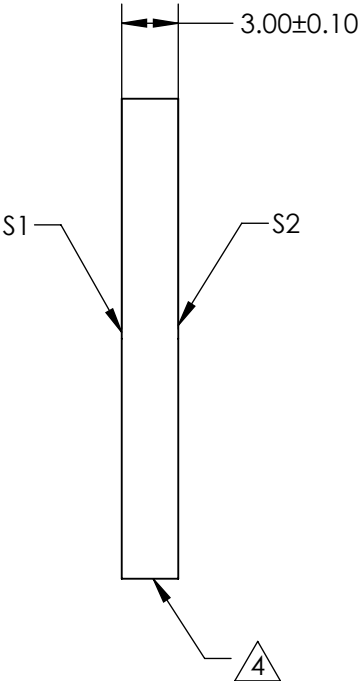
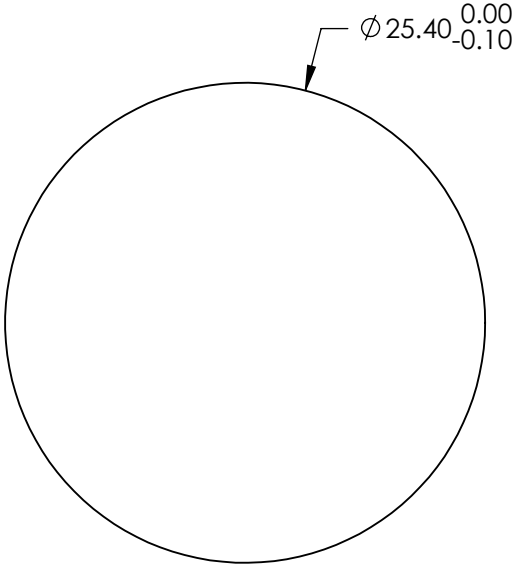
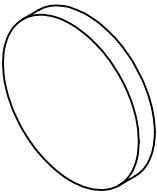



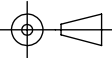
NOTES:

- 1. SUBSTRATE:  
FUSED SILICA (CORNING 7980)
- 2. S1 TO BE PARALLEL WITH S2 TO WITHIN <1 ARCMIN
- 3. COATING (APPLY ACROSS CLEAR APERTURE)  
S1 & S2: VIS-NIR (400-1000nm)  
R(ABS) ≤0.25% @ 880nm  
R(AVG) ≤1.25% @ 400 - 870nm  
R(AVG) ≤1.25% @ 890 - 1000nm
- 4. FINE GRIND SURFACE
- 5. ROHS COMPLIANT



**FOR INFORMATION ONLY:  
DO NOT MANUFACTURE  
PARTS TO THIS DRAWING**

SPECIFICATIONS SUBJECT TO CHANGE WITHOUT NOTICE  
DIMENSIONS ARE FOR REFERENCE ONLY

|                 |                     |                     |  |        |   |                |
|-----------------|---------------------|---------------------|--|--------|---|----------------|
|                 | S1                  | S2                  |  Edmund Optics® |        |   |                |
| SHAPE           | PLANO               | PLANO               |                 | TITLE  | 25.4mm Dia., 3mm Thick, VIS-NIR Coated, λ/4 Fused Silica Window |                |
| SURFACE QUALITY | 40 - 20             | 40 - 20             |  | DWG NO | 72382   |                |
| CLEAR APERTURE  | Ø 22.86             | Ø 22.86             | ALL DIMS IN  |        |   |                |
| BEVEL           | PROTECTED AS NEEDED | PROTECTED AS NEEDED | mm   |        |   | SHEET 42 OF 84 |