

NOTES:

1. SUBSTRATE:  
N-BK7

2. COATING (APPLY ACROSS CLEAR APERTURE)

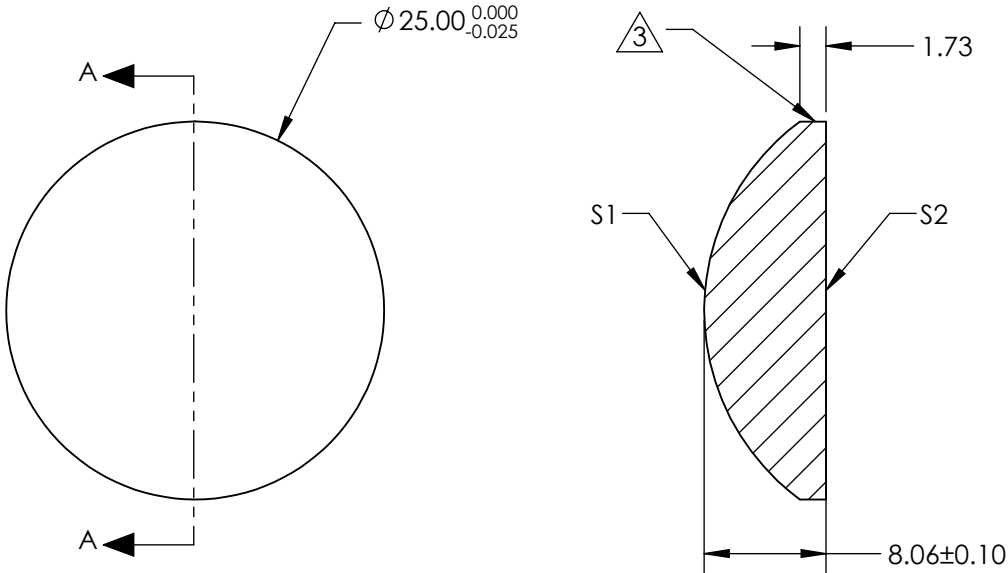
S1 & S2: BBAR (1650-3000nm)  
R(AVG) <1% FROM 1650 - 3000nm @ 0° AOI  
R(ABS) <2% FROM 1650 - 3000nm @ 0° AOI

3. FINE GRIND SURFACE

5. POWER, IRREGULARITY, AND SURFACE QUALITY SPECIFICATIONS  
APPLY ACROSS CLEAR APERTURE

6. FOCAL LENGTH (EFL): 30.00mm±1%  
BACK FOCAL LENGTH (BFL): 24.69mm

7. ROHS COMPLIANT



**FOR INFORMATION ONLY:  
DO NOT MANUFACTURE  
PARTS TO THIS DRAWING**

	S1	S2
SHAPE	CONVEX	PLANO
RADIUS	15.50	INFINITY
SURFACE QUALITY	40 - 20	40 - 20
CLEAR APERTURE	Ø 22.20	Ø 22.20
POWER AT 632.8nm	3.00 RINGS	3.00 RINGS
IRREGULARITY AT 632.8nm	0.50 RINGS	0.50 RINGS
BEVEL	PROTECTED AS NEEDED	PROTECTED AS NEEDED

SPECIFICATIONS SUBJECT TO CHANGE WITHOUT NOTICE  
DIMENSIONS ARE FOR REFERENCE ONLY

**Edmund Optics®**



THIRD ANGLE  
PROJECTION

ALL DIMS IN

mm

TITLE

25mm Dia. x 30mm FL, SWIR Coated N-BK7  
PCX Lens

DWG NO

70265

SHEET  
1 OF 15