

NOTES:

1. SUBSTRATE:
N-BK7

2. COATING (APPLY ACROSS CLEAR APERTURE)

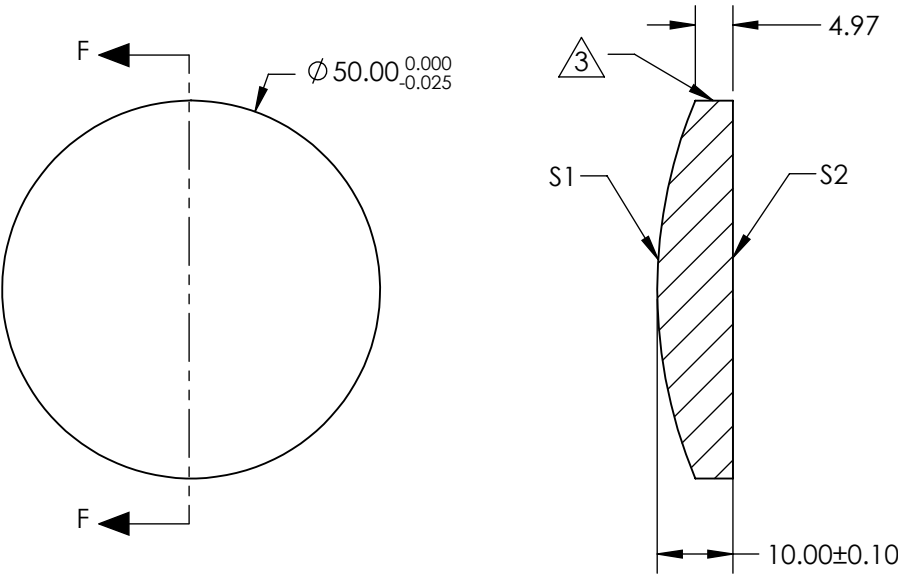
S1 & S2: BBAR (1650-3000nm)
R(AVG) <1% FROM 1650 - 3000nm @ 0° AOI
R(ABS) <2% FROM 1650 - 3000nm @ 0° AOI

3. FINE GRIND SURFACE

5. POWER, IRREGULARITY, AND SURFACE QUALITY SPECIFICATIONS
APPLY ACROSS CLEAR APERTURE

6. FOCAL LENGTH (EFL): 125.00mm±1%
BACK FOCAL LENGTH (BFL): 118.47mm

7. ROHS COMPLIANT



**FOR INFORMATION ONLY:
DO NOT MANUFACTURE
PARTS TO THIS DRAWING**

SPECIFICATIONS SUBJECT TO CHANGE WITHOUT NOTICE
DIMENSIONS ARE FOR REFERENCE ONLY

	S1	S2
SHAPE	CONVEX	PLANO
RADIUS	64.60	INFINITY
SURFACE QUALITY	40 - 20	40 - 20
CLEAR APERTURE	Ø 45.00	Ø 45.00
POWER AT 632.8nm	3.00 RINGS	3.00 RINGS
IRREGULARITY AT 632.8nm	0.50 RINGS	0.50 RINGS
BEVEL	PROTECTED AS NEEDED	PROTECTED AS NEEDED

Edmund Optics®

THIRD ANGLE PROJECTION		TITLE	50mm Dia. x 125mm FL, SWIR Coated N-BK7 PCX Lens	
ALL DIMS IN	mm	DWG NO	70277	SHEET 13 OF 15