

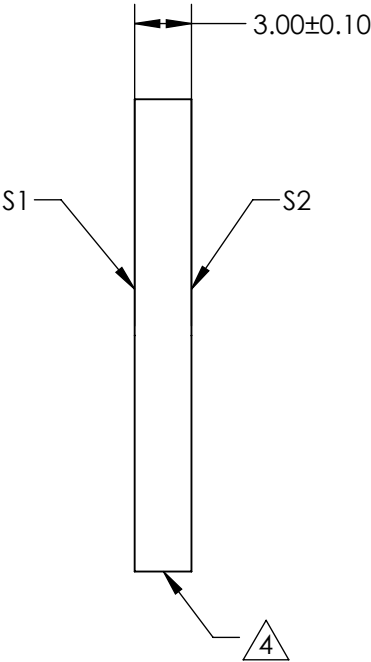
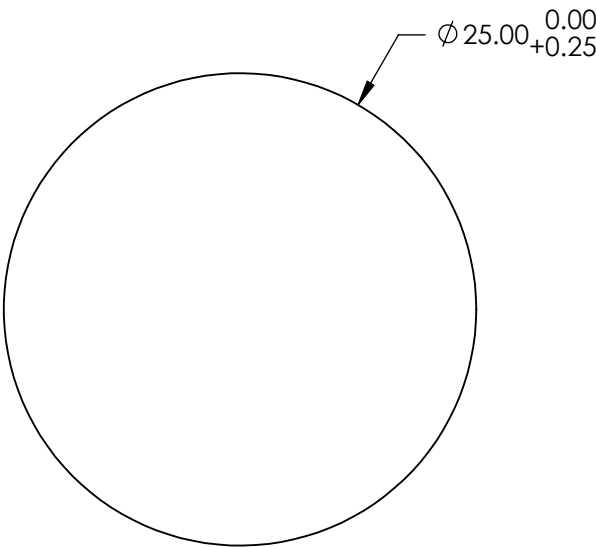
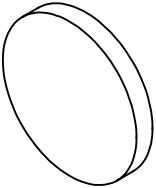
NOTES:

- 1. SUBSTRATE: N-BK7
- 2. S2 TO BE PARALLEL TO S1 TO WITHIN <1 ARCMIN
- 3. COATING (APPLY ACROSS CLEAR APERTURE)
S1 & S2: BBAR (1650-3000nm)
R(AVG)<1% @ 1650 - 3000nm @ 0° AOI
R(ABS) <2% @ 1650 - 3000nm @ 0° AOI

4. FINE GRIND SURFACE

5. ROHS COMPLIANT

6. SURFACE FLATNESS (P-V):
λ/4 (per inch over clear aperture)



**FOR INFORMATION ONLY:
DO NOT MANUFACTURE
PARTS TO THIS DRAWING**

SPECIFICATIONS SUBJECT TO CHANGE WITHOUT NOTICE
DIMENSIONS ARE FOR REFERENCE ONLY

	S1	S2
SHAPE	PLANO	PLANO
SURFACE QUALITY	60 - 40	60 - 40
CLEAR APERTURE	Ø 22.50	Ø 22.50
BEVEL	PROTECTED AS NEEDED	PROTECTED AS NEEDED

THIRD ANGLE
PROJECTION

ALL DIMS IN mm

 **Edmund Optics®**

TITLE	25mm Dia., 3mm Thick, SWIR AR Coated λ/4 N-BK7 Window		
DWG NO	70282	SHEET 3 OF 5	