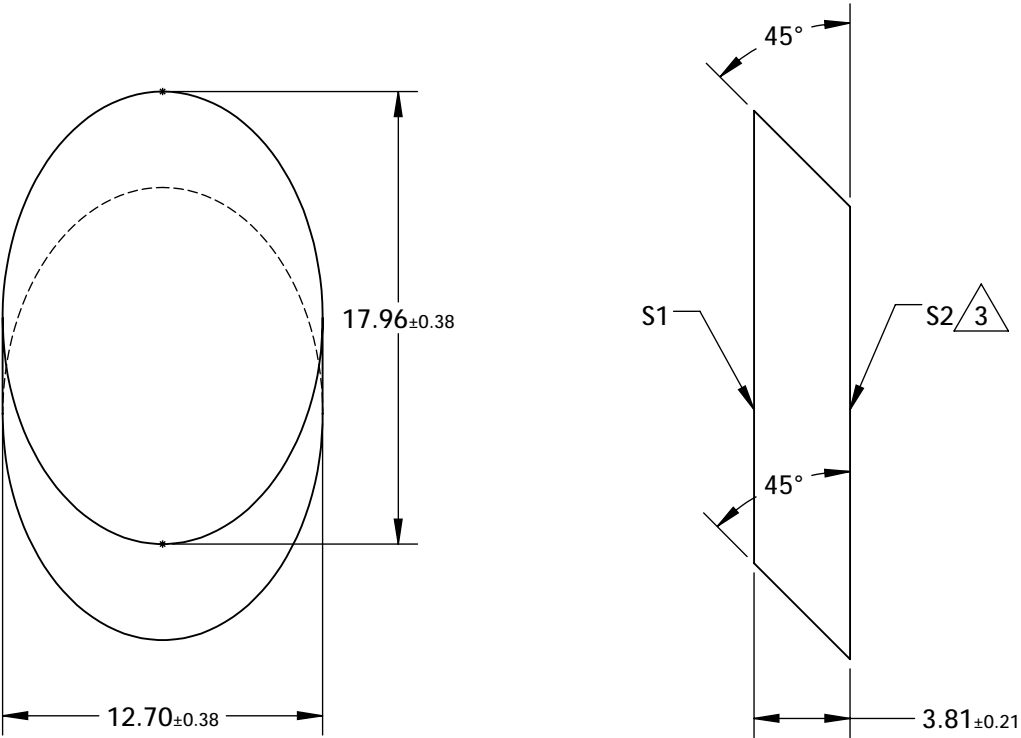



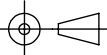
NOTES:

- 1. SUBSTRATE MATERIAL: BOROFLOAT®
- 2. COATING (APPLY ACROSS CLEAR APERTURE)
  - S1: R(AVG) >98% from 400 - 750nm @ 0-45° AOI FOR ALL POLARIZATIONS
  - R(AVG) >99% from 400 - 750nm @ 0-45° AOI FOR S-POLARIZATION
- S2: NONE
- 3. FINE GRIND SURFACE
- 4. RoHS COMPLIANT



**FOR INFORMATION ONLY:  
DO NOT MANUFACTURE  
PARTS TO THIS DRAWING**

SPECIFICATIONS SUBJECT TO CHANGE WITHOUT NOTICE  
DIMENSIONS ARE FOR REFERENCE ONLY

	S1	S2	 Edmund Optics®			
TYPE	PLANO	PLANO				
CLEAR APERTURE (mm)	16.15 x 11.43	N/A				
SURFACE QUALITY	60-40	N/A				
SURFACE FLATNESS	λ/8	N/A				
BEVEL	PROTECTIVE AS NEEDED	PROTECTIVE AS NEEDED	ALL DIMS IN	mm	TITLE	ELLIPTICAL MIRROR 12.7mm MINOR AXIS 400-700nm
			DWG NO		72942	SHEET 1 OF 1